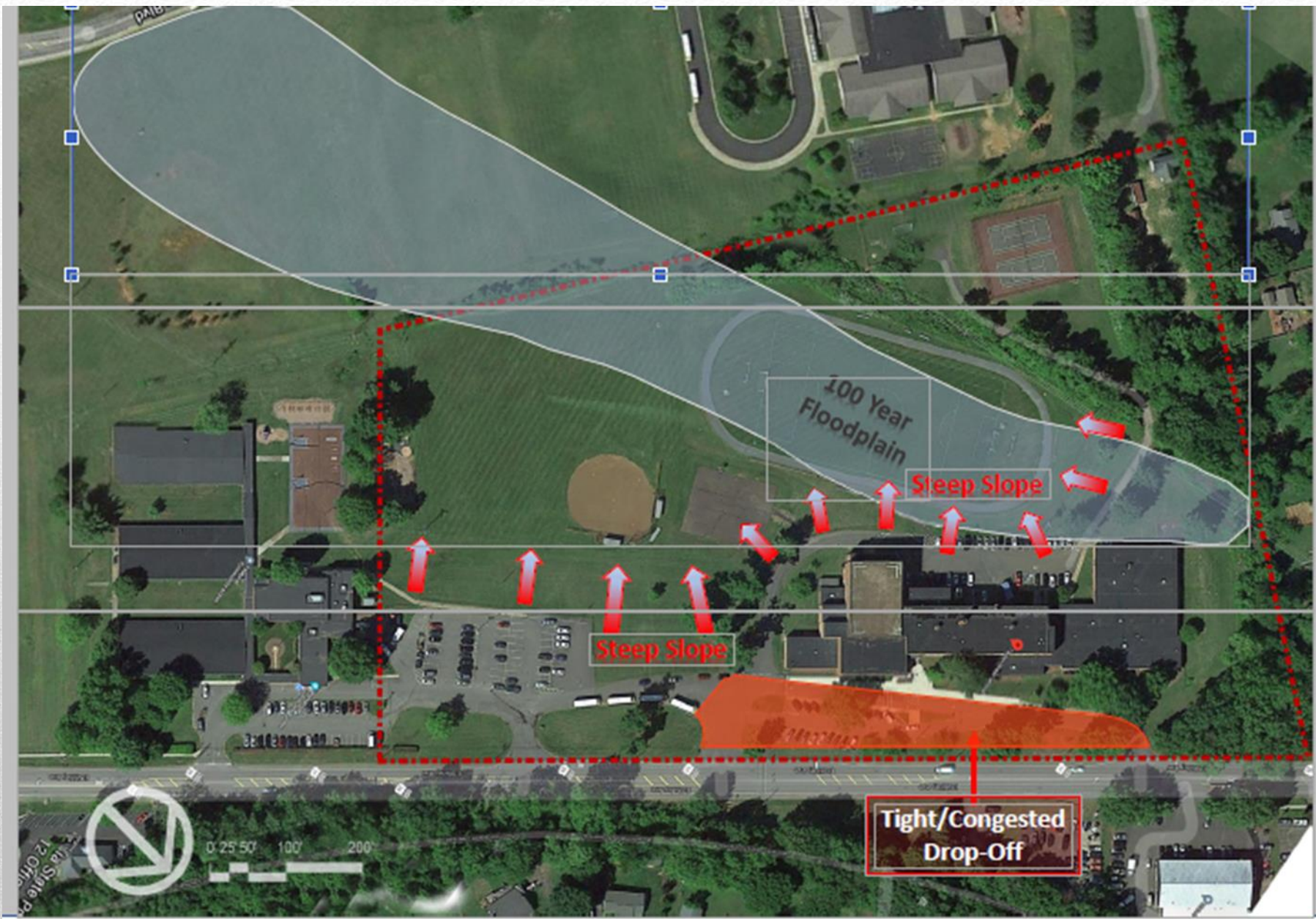


Taylor Middle School Renovation and Expansion Project

Project Understanding

- ❖ Accommodate an additional 300 Students
- ❖ Addition of new larger gym
- ❖ Cafeteria to accommodate one full grade level as well as increased storage and infrastructure to accommodate increase in size
- ❖ Additional parking and redesign of bus loop to accommodate parent pick up/drop off
- ❖ Expansion of main office
- ❖ Security vestibule for main entrance
- ❖ Necessary teacher resource areas
- ❖ Alternatives to CMU
- ❖ Custodial/utility space
- ❖ Energy Efficiency





100 Year Floodplain

Steep Slope

Steep Slope

Tight/Congested Drop-Off









RRMM
ARCHITECTS

PRELIMINARY PROJECT BUDGET
COMPLETE ADDITIONS (64,050 SF)

Date: 10/25/2022

Fauquier County Public Schools
TAYLOR MIDDLE SCHOOL EXPANSION/RENOVATION (850 CAPACITY/ 900 CORE)

<u>Construction Costs (Hard Costs)</u>	Factors	Cost/Unit	Costs
Site Costs	64,050	\$ 30.00	\$1,921,500
New Building Addition(s)	64,050	\$ 385.00	\$24,659,250
Existing Building Renovations	90,343	\$ 220.00	\$19,875,460
Total Construction Cost	154,393	\$ 300.90	\$46,456,210

Construction Contingency

Contingency Factor

Construction Cost Grand Total (w/ Contingency)

<u>Miscellaneous Project Costs (Soft Costs)</u>	Factors	Cost/Unit	Costs
Site Acquisition	1	Lump Sum	\$-00
City Reviews/Inspections, (Bldg. Permit Incl. in bldg. Costs)	-00	Lump Sum	\$-00
Construction Testing and Special Inspections	0.50%	Percent	\$232,281
Temporary Classroom Trailer Rental Costs	-00	Lump Sum	\$-00
Basic Design Services	1	Lump Sum	\$3,902,322
Additional Design Services	1	Lump Sum	\$770,709
Technology Allowance (varies per re-use, quality, etc.)	2.60%	Percent	\$1,207,861
Loose Furn. & Equip. Allowance (varies per re-use, quality, etc.)	3.60%	Percent	\$1,672,425
Printing, Advertising & Misc. Reproduction	1	Lump Sum	\$2,100
Miscellaneous Soft Costs Total			\$7,787,697

Total Project Cost (2022 Dollars) **\$56,566,718**

NOTES:

Assumes school is unoccupied during construction and no temporary trailers are required for Taylor MS.

No installation or rental of temporary classroom trailers at Warrenton is included.

Escalation will vary depending on economy.

These are preliminary numbers only and not detailed estimates. Does not reflect additional costs associated with LEED Certification.

